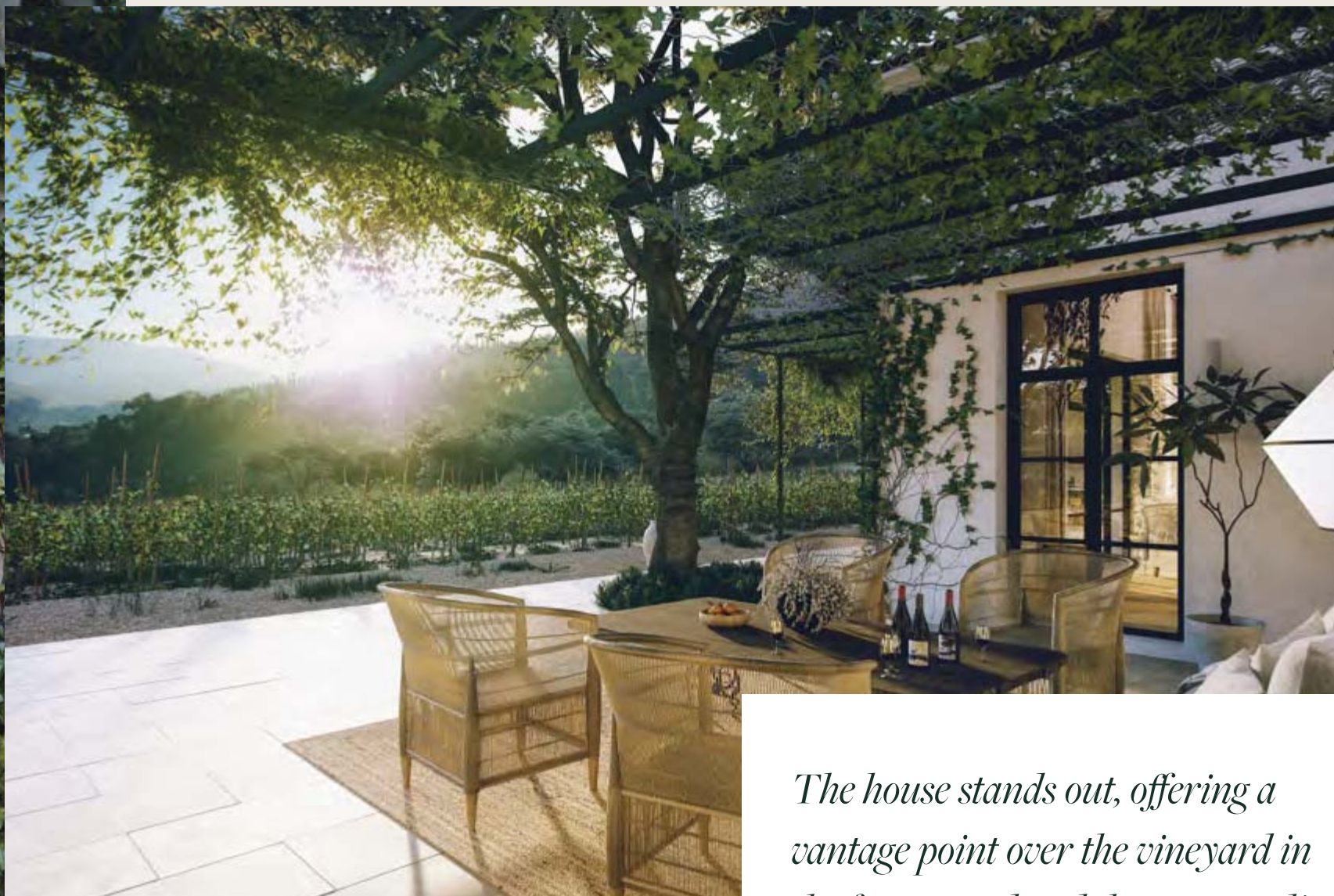




La Dehesa del Prado enjoys an outstanding location in La Melonera. Nestled behind a gentle hill, it stands on a flat extension of land where holm oaks shelter the vines.

It has been designed to provide every living experience you could want, from cosy, individual enjoyment to the perfect venue every great host seeks.





The house stands out, offering a vantage point over the vineyard in the foreground and the surrounding meadow in the middle ground, while beyond, they eye is drawn to the valley and the mountain ranges in the background.

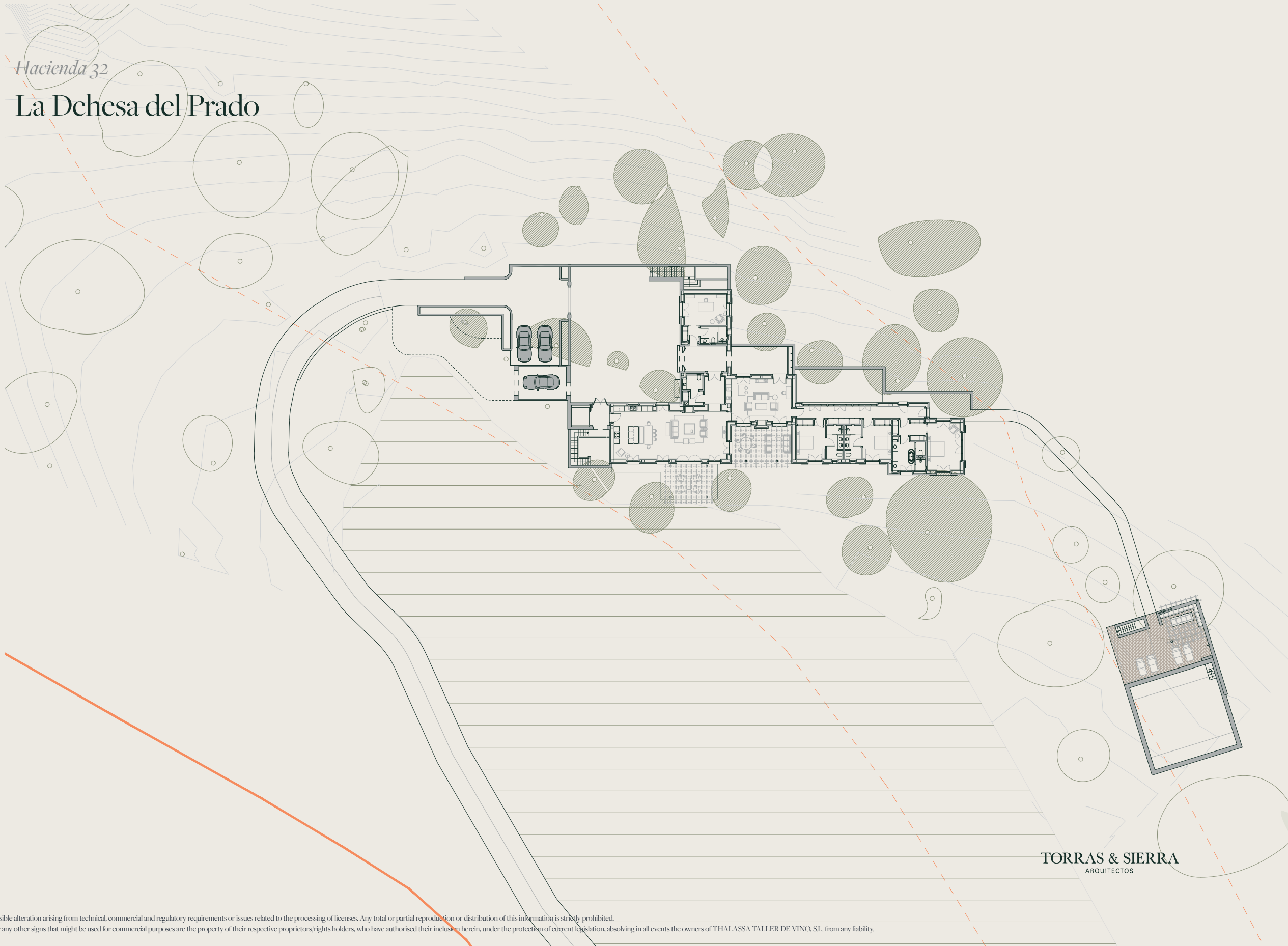
Designed by prestigious architects
Torras&Sierra, La Dehesa del Prado has
been created to enable you to make
the most of the TW&CC experience.

*The design respects and complements
the position of the holm oaks,
integrating perfectly into the
surrounding meadowland.*



Hacienda 32

La Dehesa del Prado



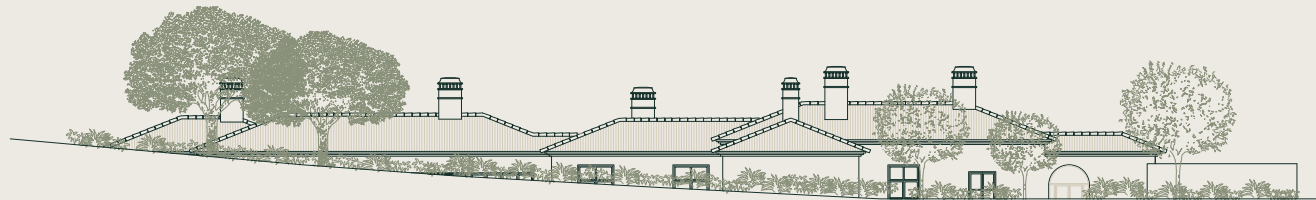
TORRAS & SIERRA
ARQUITECTOS

Elevations

01 West



03 East

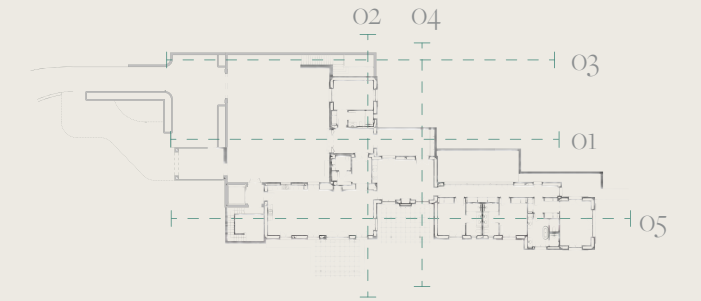


02 Entrance



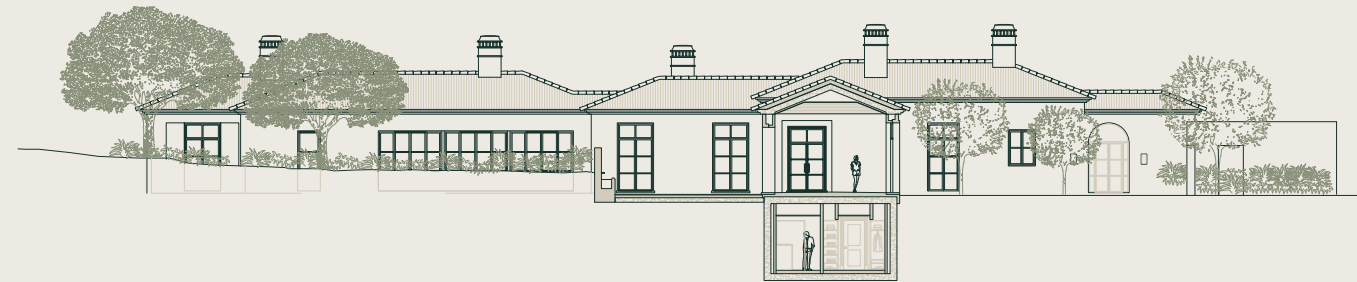
04 South





Section drawings

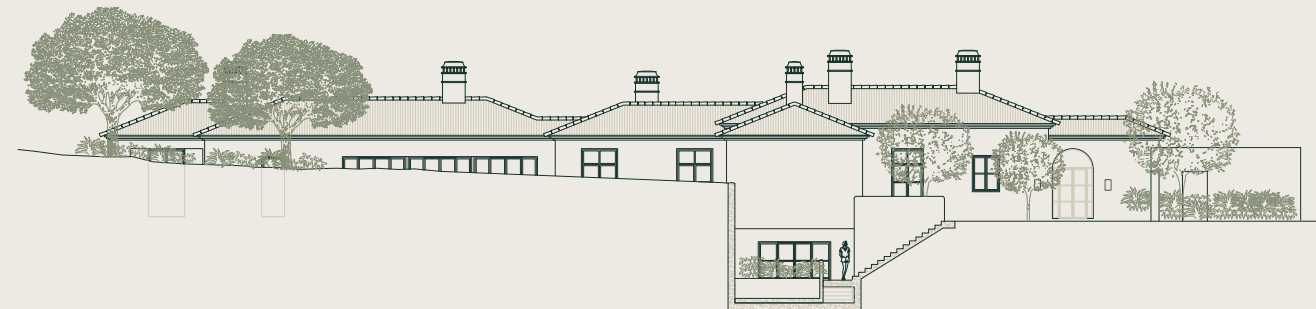
01 West



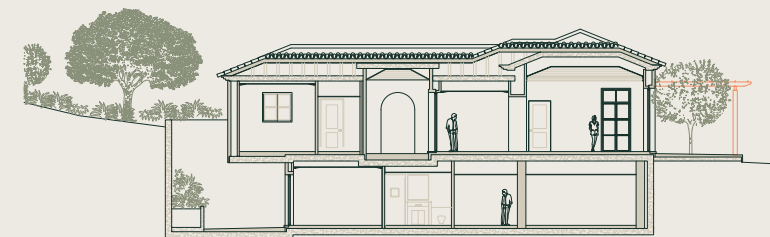
02 Entrance



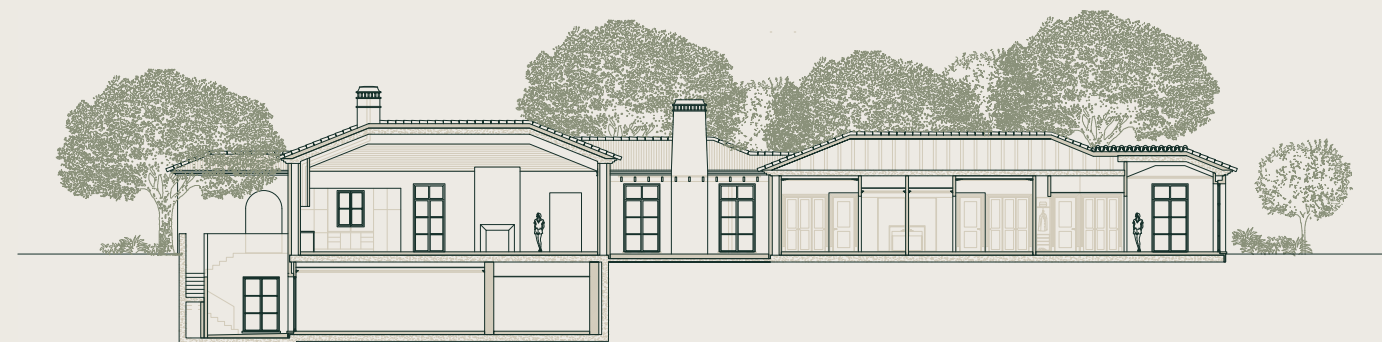
03 East



04 South



05 West





*The Wine & Country
Club*

R O N D A

sales@wineandcountryclub.com

+34 673 876 826

wineandcountryclub.com

