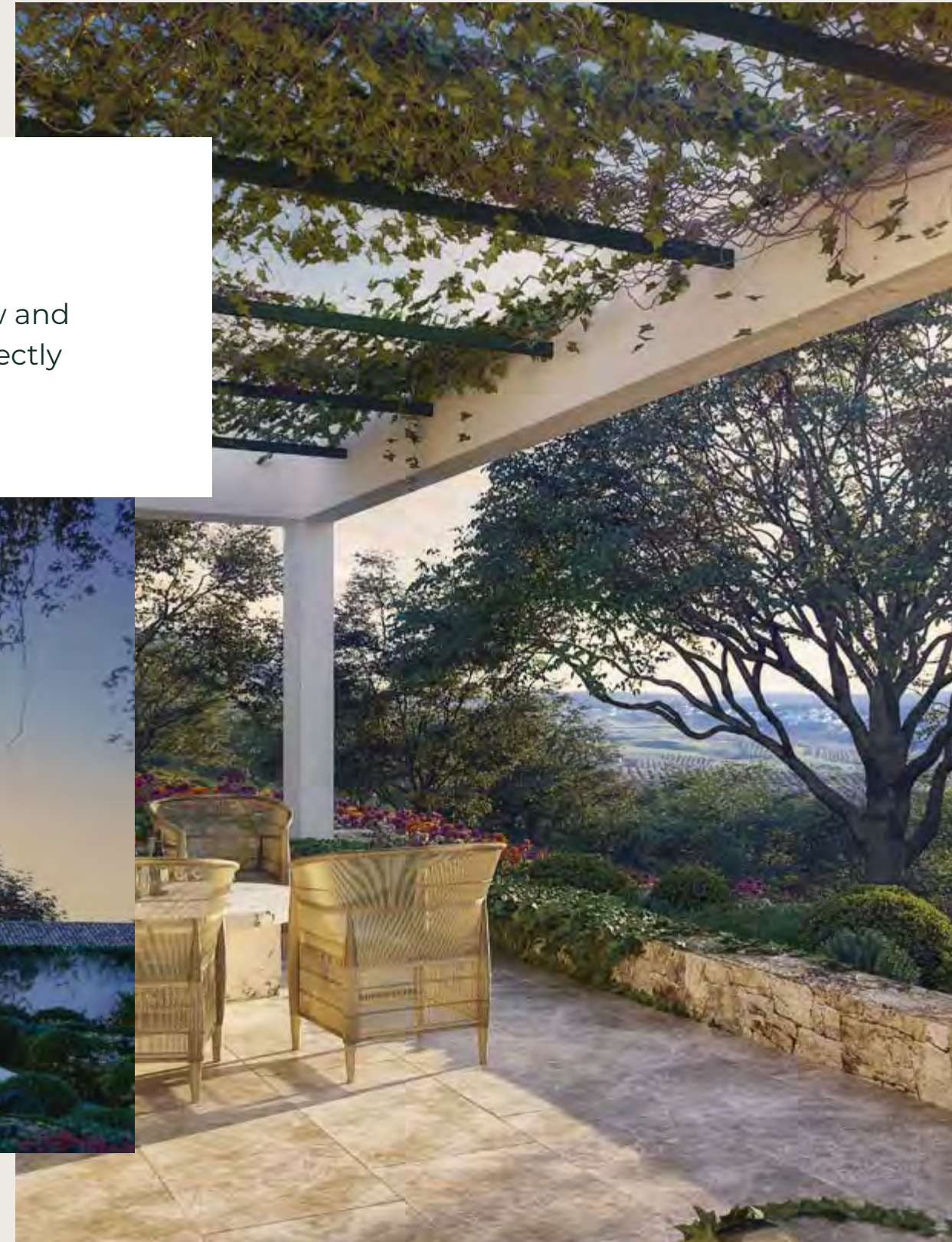
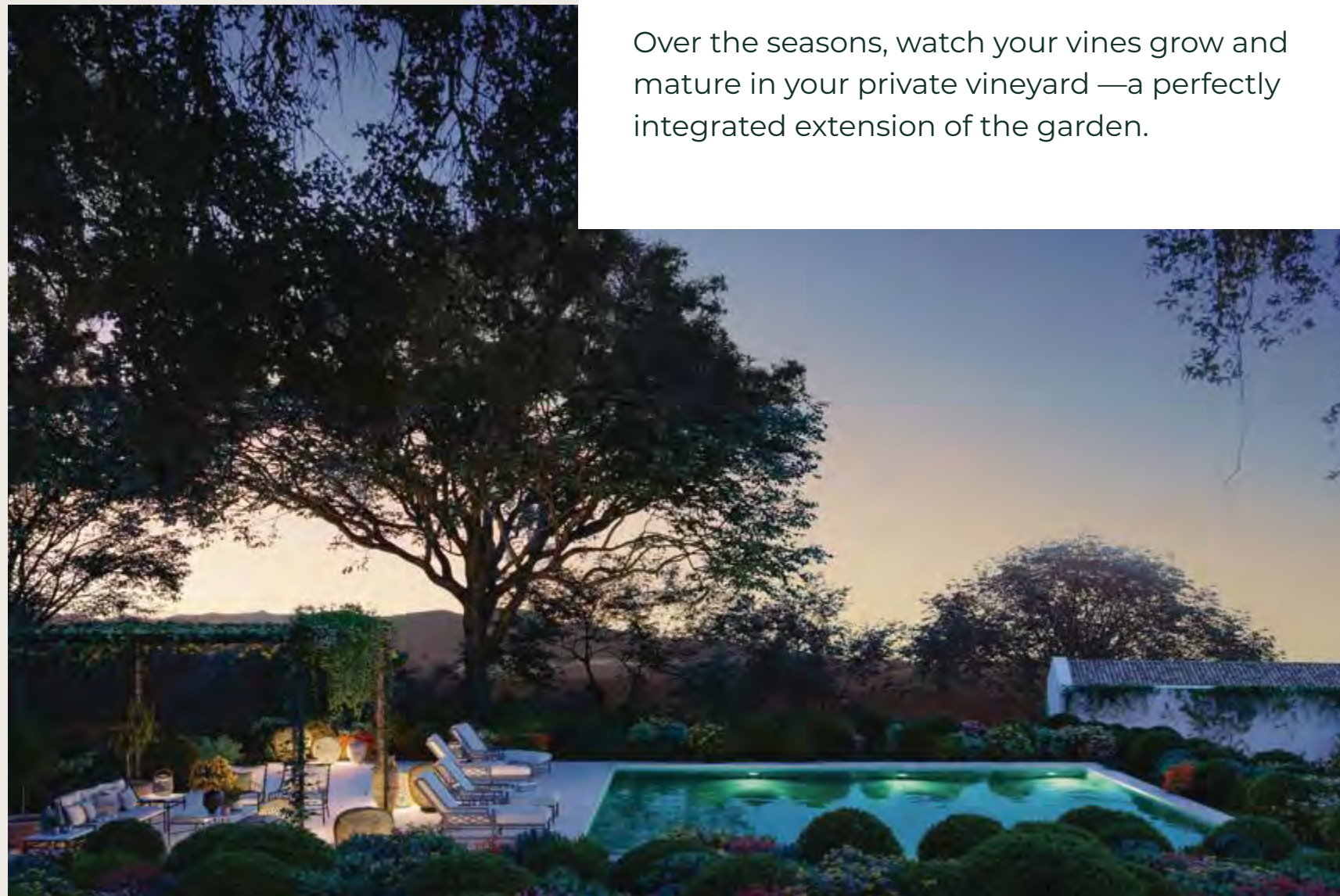


La Dehesilla perfectly reflects the spirit of TW&CC. The characteristic Ronda construction is surrounded by and perfectly integrated into the local ecosystem, commanding magnificent vistas of the Las Nieves and Grazalema mountain ranges.



A sensational vantage point

Over the seasons, watch your vines grow and mature in your private vineyard —a perfectly integrated extension of the garden.





The building itself, designed by award/ winning architects Torras&Sierra, flows elegantly, bestowing a unique personality on each separate space.

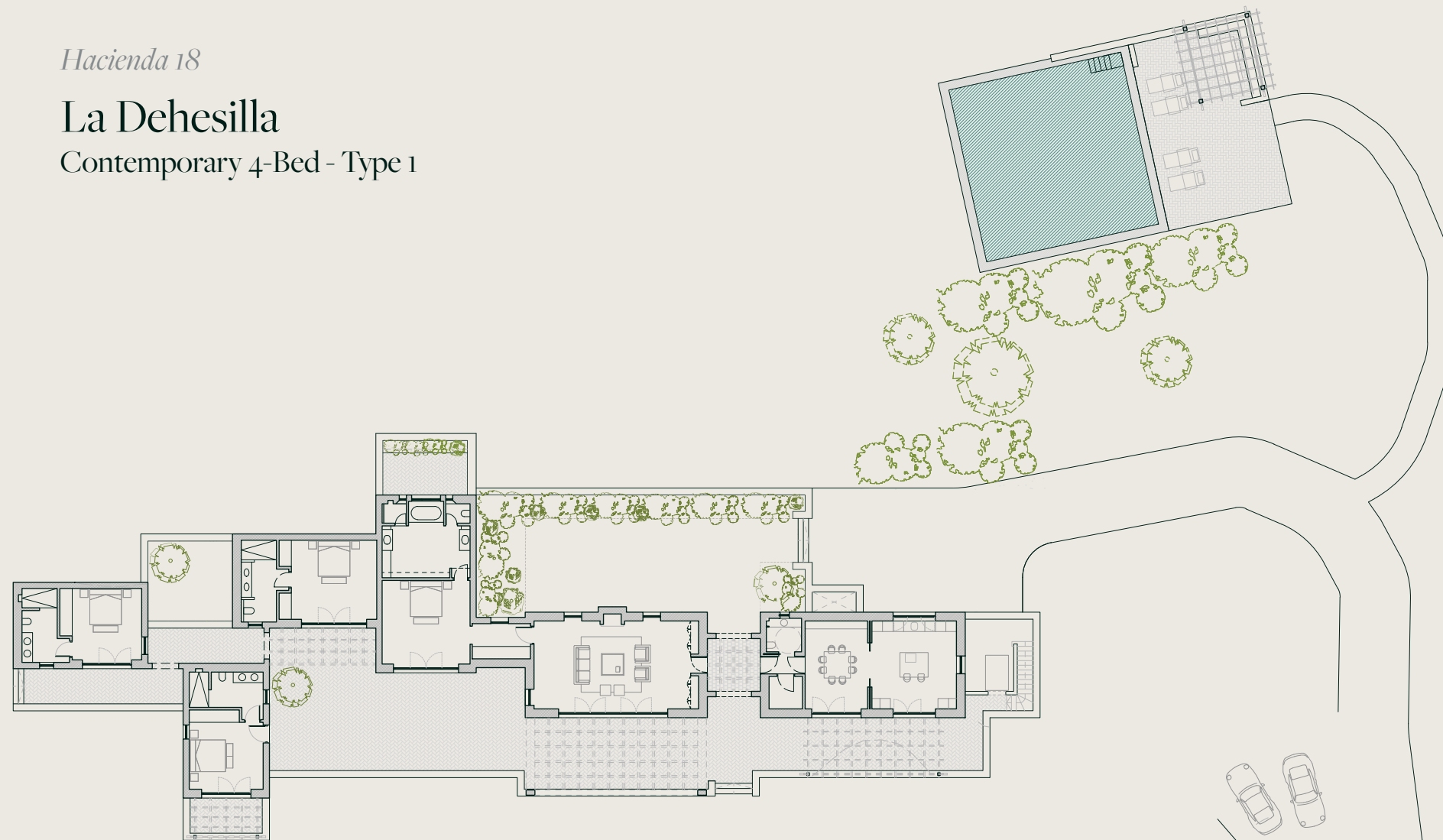
This can be the perfect place to withdraw from the world and enjoy some privacy or the ideal venue to receive guests, enjoy your own wine and make the most of the spirited life of Ronda and the wider region.

Hacienda 18

La Dehesilla

Contemporary 4-Bed - Type 1

Site Plan



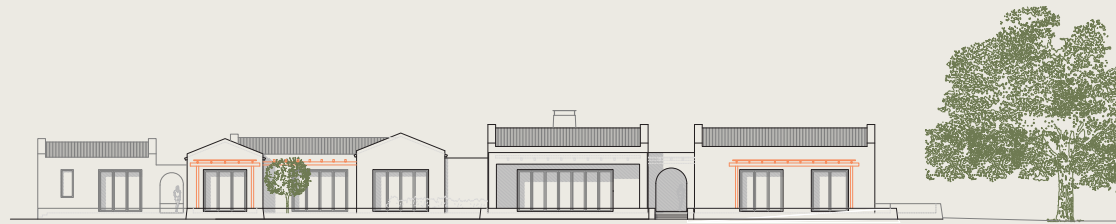
Hacienda 18

La Dehesilla

Contemporary 4-Bed - Type 1

Elevations

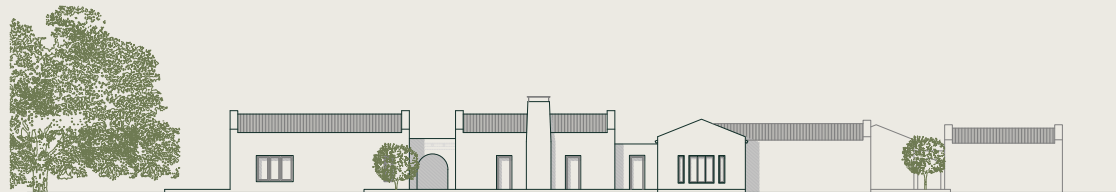
01 South East



02 South West



03 North West



04 North East



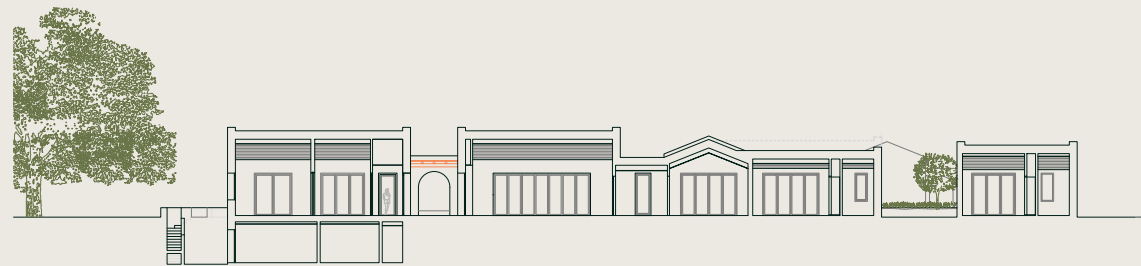
Hacienda 18

La Dehesilla

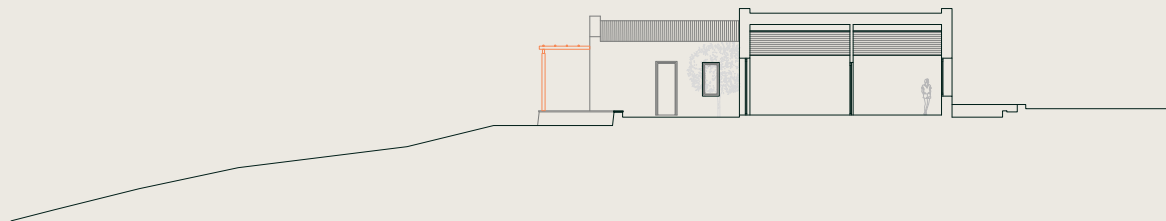
Contemporary 4-Bed - Type 1

Section drawings

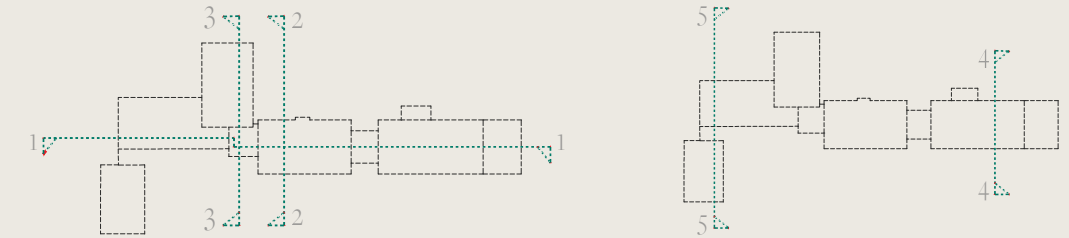
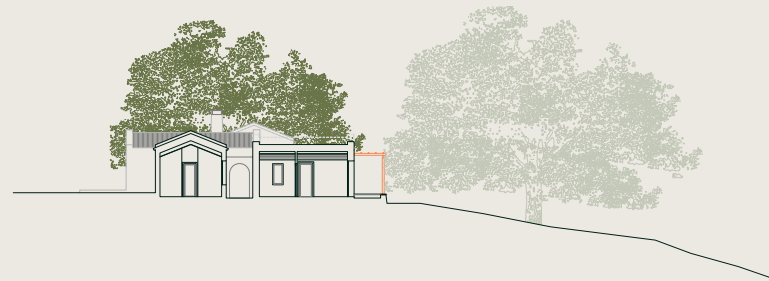
Section 01



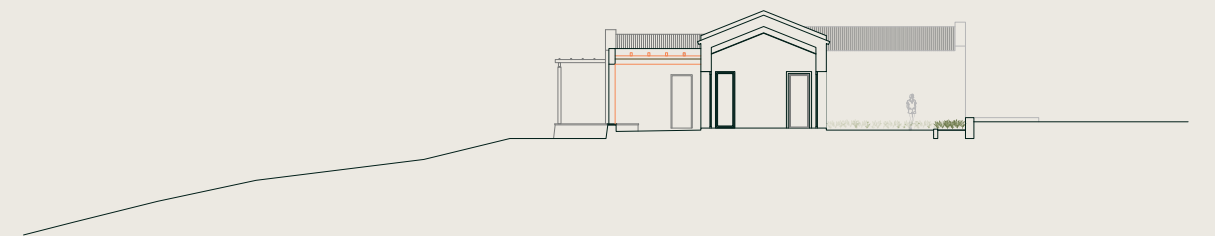
Section 03



Section 05



Section 02



Section 04





The Wine & Country
Club
R O N D A

sales@wineandcountryclub.com

[+34 673 876 826](tel:+34673876826)

wineandcountryclub.com

